



**A proven past,
a prestigious present
and the very future
of complete marine
lighting & electrical systems
for every project,
application and budget**

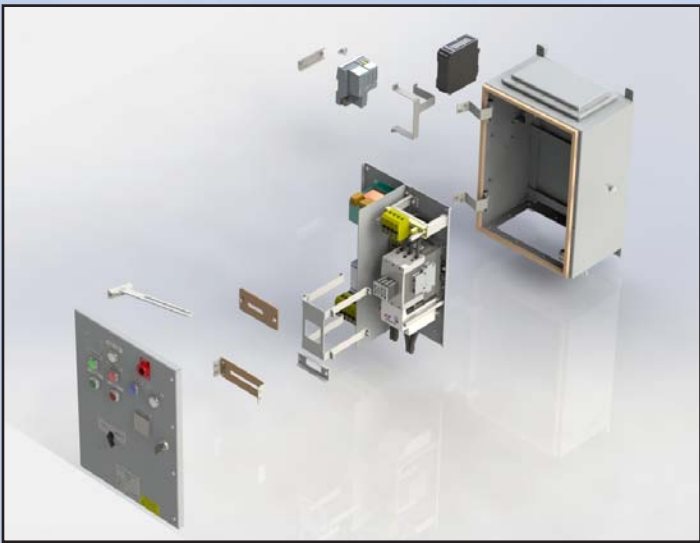
**That's the versatility
of McGeoch**

www.mcgeoch.co.uk

Electrical



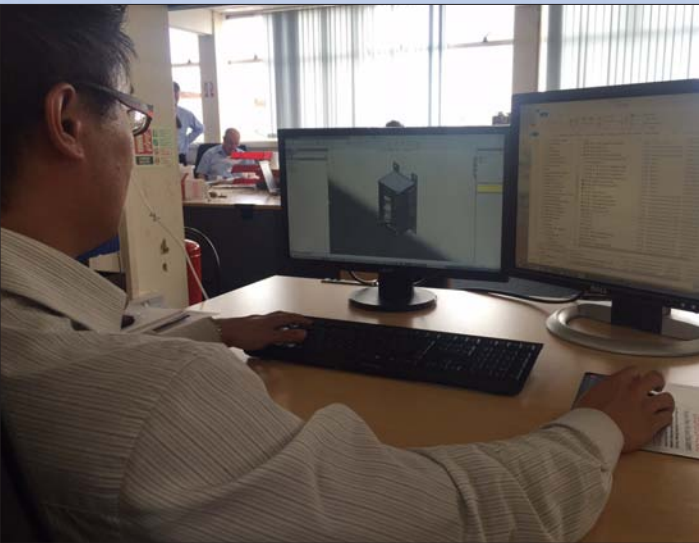
Solutions



Lighting



Capability



Electrical Capability

McGeoch is a proven supplier to the British Royal Navy's Type 45 Destroyer, Astute and Successor Submarines and Queen Elizabeth (QE) Class Aircraft Carrier Projects and continues to build its reputation for quality, reliability and service in a wide field of both naval and merchant shipping applications.

Upon acquiring William White switchgear in 1999, McGeoch was able to take advantage of its vast experience in instrumentation panels for warships.

We are specialists in the design and manufacture of marine electrical equipment. Our experience has led to the extensive range of products listed below ...

- Control & Instrumentation Panels
- Emergency Supply Connections
- Isolating & Hand & Automatic Change Over Switches
- Junction Boxes
- Load Centres
- Power Distribution Panels
- Suppressor Boxes



Our equipment can include high quality ruggedised enclosures for harsh environments, qualified with certified shock, vibration and ingress protection testing.



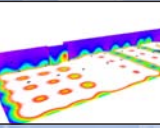
Bespoke Solutions

McGeoch technology has a proven history in design, prototyping and qualification testing. Decades of various tried and tested techniques mean we are also able to offer bespoke solutions of the highest calibre.

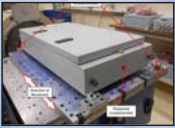
Design engineering



Light output calculations



Qualification testing



Production plant



Assembly



On-site work



Factory acceptance testing



Survey/Repairs

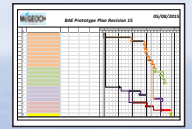


Services Include

Design



Project Management



Prototype



Qualification Testing
(IP, EMC, Shock, Vibration, ATEX etc)



Manufacture



McGeoch Capability

Design



Painting
(wet spray/
powder coating)



Project management



Assembly



CNC Machining



Testing



Full fabrication facility



Survey/
repairs



www.mcgeoch.co.uk



www.mcgeoch.co.uk

McGEOCH

TECHNOLOGY

Incorporating

williamwhite



William McGeoch established his company of brass founders in Glasgow in 1832. As the century unfolded, McGeoch moved into the manufacture of fittings for the then new and exciting market for electric lighting.

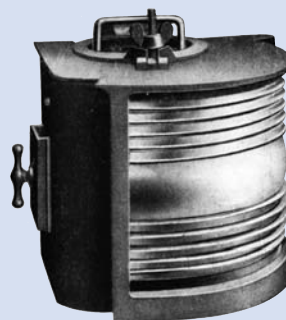


By the early 1900's, the company had a substantial, purpose built, head office in Glasgow incorporating a warehouse and three floors of showrooms. They also established showrooms in London and Newcastle and a manufacturing plant in Birmingham. The range already encompassed a wide choice of domestic and marine electrical fittings from 'artistic' statuettes holding lamps to watertight navigation lights.

Later catalogues contained further additions to the McGeoch range including marine switchboards on slate panels with open switches and the main manufacturing plant in Birmingham featured more prominently with custom built design offices incorporated.

In 1999, William White Switchgear was acquired by McGeoch Technology bringing with it current experience of designing and manufacturing power distribution and control and instrumentation panels for warships.

Today, McGeoch Technology's entire operation is centred in Birmingham where a modern design and manufacturing capability has been established for power distribution panels, instrumentation panels and internal and external light fittings for both harsh environments and more budget conscious projects.



86 Lower Tower Street, Birmingham B19 3PA
Tel: +44 (0) 121 687 5850 Fax: +44 (0) 121 333 3089
Email: sales@mcgeoch.co.uk
www.mcgeoch.co.uk